

VISUAL ACE

BUSINESS MANAGEMENT SOFTWARE

for full accounts, inventory & management report, for any business

HIGHLIGHTS

- **Integrated Modules:** Accounts, Receivables, Payables, Banking & PDC, Inventory, Fixed Assets, Payroll & Personnel Management, Job-Costing, Retail Module, Manufacturing, Real-Estate etc.
- **Complete Management Reporting & Graphical Analysis,** instantly
- **Multi-User, Multi-Locations, Multi-Currency**
- **Any business, any size:** Wholesale, Retail, Manufacturing, Contracting
- **Business of any type:** General Trading, Electronics, Textiles, Hardware, Spare Parts, Garments, Building Materials, Food Stuff, Retail Stores, Mobile Phones, Bearing, Contracting, Manufacturing etc...
- **Advanced options** include Barcode Label Printing & Scanning, Picture Catalogues, Retail Customer Database & Privilege Cards, Hand-held Terminal for Stock Check & Mobile Sales, Remote Workstations etc...
- We have many **prestigious clients**, local & overseas, for a long time
- **Supported** by Auditors, Public Accountants, Analysts & Consultants
- **Complete Training,** Electronic **User Manual** & Online Modem Support
- **Secured** Access, User Levels, Password Control & Audit Trails
- **Front-End:** Developed using **most powerful software tools** today : Microsoft Visual Basic, Active-X Controls, Crystal Reports
- **Powerful Database** options of MS Access, MS SQL-Server or Oracle
- Works on **any platform:** Microsoft Windows 98/ME/2000/NT or Novell
- **Account Control Center** – Enquiry of any Account – with Visiting Card, Balances, any related Report, Employees' Master with Picture & Sign
- **Online Document Printing** in Colour, with Company Logo and Letter Head, Multiple Copies, Without Pre-printed Stationery
- **Email/Read/Print/Control** your reports in **most popular PDF format**
- Create **your own Document Types**, fully definable
- **Definable Groupings & fields** in Accounts, Inventory, Fixed Assets, Job-Cost, Employee Master and so on...
- Reports in **multiple levels of groupings**
- **Drill Down** from Trial Balance/Balance Sheet/P&L till the transaction
- **Definable Menus & Sub-Menus**
- **Activity Code** for Profit-Centre-Wise Cost/Benefits analysis

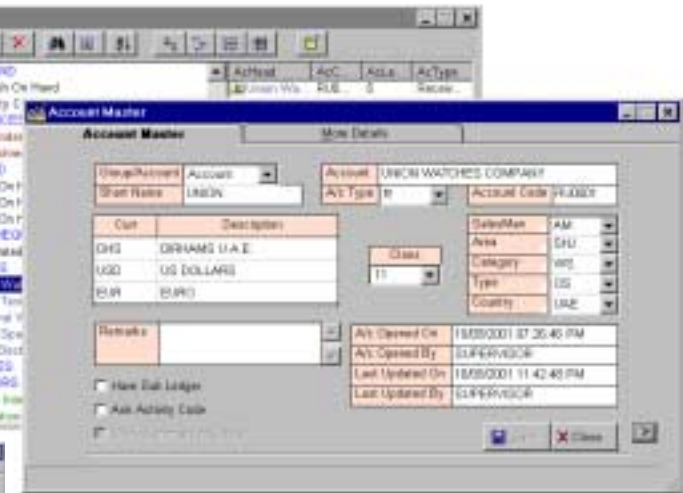
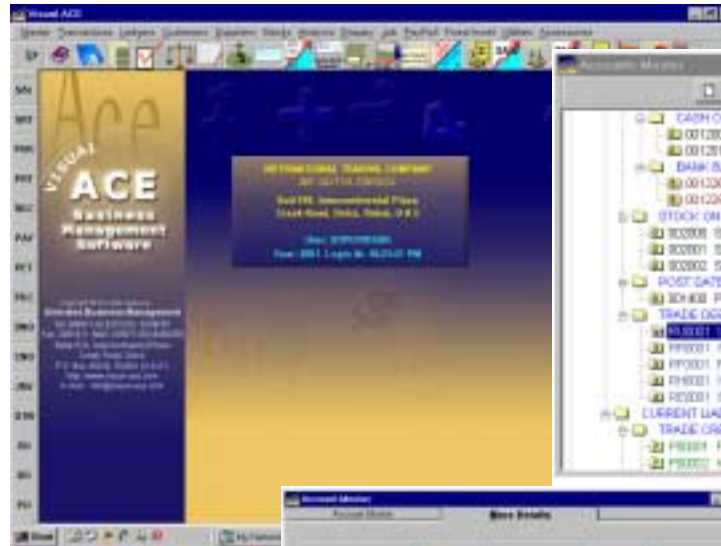
USER FRIENDLY & POWERFUL

- Windows-based **GUI Interface** – User Friendly Icon-Bars & Controls
- Allows **Multiple Windows** at the same time
- All Reports in **Colour**, with **Company Logo**, A4 size, on a Colour or Black & White Laser/Inkjet Printer
- **Document Control Bar** (Icons : Top, Next, Prior, Bottom, Find, List, Print, Document Properties, Related Documents, Filter, Exit)
- **Powerful Reports**, with Zoom In/Out any area of the Report, Multiple Report Pages, Go to any Page, Searching of any Text/Figures in Report, Make your own query, Search Expert, Facility to Expand or Summarise any Grouping Criteria and go directly there, Export/Cut/Paste to Excel/Word/Text File/PDF/RTF etc.
- **Graphical Analysis** of Reports – any type of Graphs, with full options

Details ? Demos ? Deals ? Contact Now !!

Emirates Business Management

510, Intercontinental Plaza, Creek Road, Deira, Dubai (UAE)
Tel: 050-6450359, 04-2237270, 04-2234787 Fax: 04-2281411
Internet: visual-ace.com Email: sales@visual-ace.com



GENERAL FEATURES:

- Software Developed by professionals & Authorised by Auditors & Accountants
- Allows user to define any number of currency. Update Exchange Rate during transaction entry.
- Supports multi-user operation under Windows 95/98/ME/00/NT, Novell
- Maintains stock position and stock movements of different warehouses.
- All modules are totally integrated. Allows on-line updating of transactions, reports till last second.
- Supports Mouse operations.
- Convenient choices through Push Buttons, Radio Buttons, Pop up Buttons Pop up Bars, Invisible Buttons, Check Boxes and so on.
- Help Pop up Everywhere.
- Codeless operations (just type name)
- Allows to redefine Menu Pages, based on nature of job and user access level
- Provides user friendly and logical screen layout. Performs extensive data validation. Easy navigation in the record table (top, Bottom, Next, Prior). Search facility on any field. Allows to edit and delete any record anytime, after checking the password. Exhaustive queries on database.
- Automatically keeps track of any changes made in the database.
- Maintains unlimited users, at definable levels and a Supervisor level to ensure the safety and security of data.
- Option to View, Print or Save as File any Report. Dialogue boxes for easy multiple section. Cut & Paste facility. Allows to easily move, and search anything within the report.
- Allows Direct Faxing (Subject to Hardware support)
- Supports Industry standard printers.
- Allows to Export data to any Word processor or Spreadsheet, for further data analysis and manipulation.
- Provides basic utilities like Backup, Restore, Re-Indexing & Sophisticated utilities like Calculator & Diary.

- No need for Day-End or Month-End Processing. Month-Closing provided only for Security & Control.
- Simple, One-Step Year-End Processing. Allows to keep the year open for unlimited time and allows Year-End re-processing. Automatically creates new year files and C/f balances.
- Keeps records of unlimited Years.

MAIN MODULES:

- General Ledger
- Accounts Receivable
- Accounts Payable
- Banking & Post-dated Cheques
- Inventory Control
- Analysis (Management Reports)
- Master & Transaction Enquiry
- Masters
- Transactions
- Utilities
- Accessories

OPTIONAL MODULES:

- Order Processing Module
- Letter of Credit
- Job-Costing Module
- Manufacturing, Bill of Quantity
- Payroll & Personnel Management Module
- Documents Printing
- Cheque Printing Module
- Bar Code Interface Module
- Point-of-Sale (Retail) Module
- Fixed Assets Management
- Picture Cataloguing
- Hand-Held Terminal
- Multi-User Option
- Any other

BRIEF ABOUT SOME MODULES:

General Ledger Control & Financial Analysis:

- Chart of Accounts
- Account Enquiry
- Audit Trail
- List of any Type of Transactions giving Debits & Credits with other transaction details for review
- Statement of Account

- Trial Balance
- Balance Sheet
- Profit & Loss Account
- Budget Analysis
Giving comparison of Current Period and Year-to-date Actual and Budget figures, with the Variance
- Ratio Analysis
Giving an analysis of financial performance/ health with all important Ratios calculated automatically
- Monthly Analysis
Giving Month-wise comparative figures for Review
- Previous Year Comparisons
Giving comparison of MTD/YTD figures of Current Year v/s Previous Year with Variance

Receivables Control & Analysis:

- Customer Log
- Customer Enquiry
- Statement of Customer Account
- Customer Transaction Report
- Customer Balances
- Outstanding Documents Report
- Age Analysis
- Credit Control
- Sales Analysis
- Last Price Enquiry
- Activity Report
- Customer Trial Balance
- Transaction Summary

Pavables Control & Analysis:

(All reports same as in Receivables)

Inventory Control & Analysis:

- Stock Log
- Grouping Logs
Brand, Type, Category, Sub-Category, Dept, GPC etc
- Stock Enquiry
- Stock Card
- Stock Balance Report
- Price List
- Documents Log / Stock Registers
- Stock Movement Report
- Stock Age Analysis
- Re-Order Report
- Slow Moving
- Sales / Gross Profit Analysis

Shows Sales, Sales contribution, GP%, Gross profit margin, Gross profit contribution, by any Grouping Criteria, with Multi-Grouping Levels

- Stock Turnover Report
- Break-Even Analysis
- Monthly Sales Comparison
- Stock Transaction Summary
- Last Price Enquiry

Banking & PDC Control:

- Bank Master Enquiry
- Post Dated Cheques Received & Issued
- Cheque Discounting & Dishonour
- Automatic Bank Reconciliation
- Overdraft Interest Calculation
- Statement of Bank Account
- Trial Balance of Bank Accounts

Job-Costing:

- Job Master & Budgets of Income, Cost of Material, Labour & Expenses, Gross Profit
- Job Material Issues & Returns
- Job Purchases & Returns
- Job Invoicing
- Job Accounts Transactions
- Time Sheet Entry linked to Payroll
- Job Master Enquiry
- Job Register, Summarised & Detailed
- Job Profitability Analysis
- Job Statement of Account
- Job Card
- Job Financial Statements
- Job Transaction Reports

Payroll & Personnel Management:

- Complete Details of Employee
- Allows unlimited allowances & deductions.
- Automated Salary Register
Detailed & Summarised
- Pay Slip Printing
- Coinage Report
- Bank Transfer Letters
- Employee History
- Automated Calculation & Provision for Gratuity, Leave Salary

and Air Passage Provisions as per the Local Laws or as defined by the User.

- Expiry Date Control of Passport, Visa, Labour Card, Driving Licence, Port Card Etc.
- Multi-Department Facility
- Salary/Allowances/Deductions can be Hourly, Daily, Monthly
- Automatic Deduction of Loan Instalments
- Multiple Payment Methods: Cash, Cheques, Bank Transfers
- Optional Integration with Electronic Time Machines
- AND MANY MORE...

SPECIAL REPORTS / FEATURES:

- Backup & Restore
- Missing Documents
- Edited / Deleted Documents Log
- User Logs
- Software Maintenance Log
- Physical Stock Comparison
- User Level Creation
- Year-End Processing
- Month-End Closing

**MANY MORE MODULES,
MANY MORE FEATURES,
MANY MORE REPORTS ...**

FOR MORE DETAILS, CALL NOW:

**Emirates
Business
Management**

Tel: (00971-4) 2237270, 2234787

Mobile: (00971-50) 6450359

Fax: (00971-4) 2281411

E-mail: sales@visual-ace.com

HomePage: www.visual-ace.com

P.O.Box: 40234, Dubai (UAE)

Location: 510, Intercontinental Plaza, Creek Road, Deira

All rights reserved.