

VISUAL-ACE

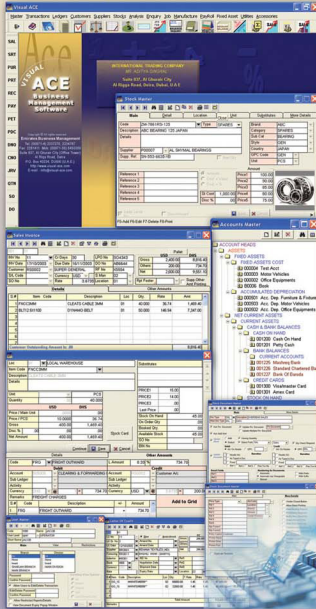
Business Management Software

a complete business management software with accounts, inventory control & management reporting

Main Features

- Complete Business Management - Including Accounts, Inventory Controls & Management Analysis
- Multi-Location, Multi-Branch, Multi-Division, Multi-Currency, Multi-User (Local or Remote Networks)
- Business of any Size - Enterprise, Large, Medium, Small
- Business of any Type - Retail, Wholesale, Contracting, Service, Manufacturing etc
- Control for any Type of Inventory - General Trading, Electronics, Jewellery, Textile, Building Materials, Spare Parts, Hardware, Mobile Phones, Restaurant, Hotel, Real-Estate, Exchange, Contracting, Manufacturing
- User-Friendly, Windows-based Graphical-User-Interface, Icon Bars, Short-Cuts, Scroll Bars, Menu-Drives, Mouse-Enabled, Report-Dialogue Box, Multiple Windows, Help Look-Ups, Code-less operations etc
- Integrated Main & Optional Modules
- Online Updates & Documents Printing
- Management Analysis Reports - like Sales/Profitability Analysis, Slow Moving Stock, Stock Age Analysis, Break-Even Analysis, Turnover Reports, Customer Age Analysis, Budgeting & Ratio Analysis, Previous Year Comparison, Monthly Comparisons, Graphical Analysis
- User Access, Edit/Delete Control, User Logs etc
- Powerful Audit Trails - Double Entry System
- Definable Fields/Groupings in Accounts, Customers, Suppliers, Inventory Master, Employee Master, Fixed Assets Master etc
- Any Number of Main & Sub-Ledgers
- Zoom In To Document Level from Accounts Master, Inventory Master Enquiry, Financial Statements etc

- Any Number of Activity/Cost Centers
- Creates your own definable Documents!
- Various Inventory Costing Methods - with Automatic Landed Cost calculations
- Powerful Reporting - Zoom In/Out, Search, Page Navigation, Grouping Tree, Export any Report to Excel, Word, HTML, RTF, Text, PDF etc.
- Locally Made, Customisable, International Standard
- Supported by Auditors, Accountants, System Analysts
- Complete Training & Support



Main Modules

- General Ledger
- Accounts Receivables (Customers)
- Account Payables (Suppliers)
- Banking & Post-Dated Cheques
- Inventory Control
- Management Analysis Reports
- Masters, Transactions, Utilities & Files

Inventory Features

- Define own fields & groupings in Item Master
- Define 'Main Item' and Item for each import
- Include Picture of each Item with Item Master
- Multiple Locations for warehouses, branches etc
- 5 definable Price Levels - In Amount or Cost+%/or Cost+Profit. Price Levels can be labelled, e.g. Retail Price, Wholesale Price, Export Price, Dealer Price etc
- Define Stock Min/Max, Re-Order Levels & Re-Order Quantity for Stock Control & Re-Ordering
- Multiple Units - with conversion factors & Price Levels
- Substitutes - for linking replaceable items
- Stock Transactions: Import & Local Purchases, Purchase Returns, Sales, Sales Return, Stock Adjustments, Location Transfers etc
- Automatic Landed Cost calculation of the Items - including Item Cost, LC Charges, Freight, Custom, Insurance, Clearing Charges, Hamali etc
- Various Costing Methods can be selected - Average Cost, Last Costing, FIFO, Last Cost, Standard Cost etc.
- Define Fields & Grouping for each Type of Stock
- Bin Locations for exact rack address of items
- Multi-Level Groupings in Stock Reports
- Stock Master Enquiry (Detailed & Summary) - Showing complete details of any item - last cost, last price, Stock Balance, Movements, Last Documents etc - allowing to zoom-in to Stock to view any Transaction
- Stock Balance & Stock Card Reports
- Stock Transaction Register
- Price List & Last Price Enquiries for Sales, Purchase
- Stock Adjustments for Excess/Short Stock
- Stock Age Analysis Report for Old Stocks
- Slow Moving Stock Analysis Report

- Stock Movement Report
- Stock Transaction Analysis Report
- Sales & Profitability Analysis Report by Item, Item Groupings, Indentor, Supplier, Manufacturer, Customer, Customer Grouping, Salesman, Invoice etc
- Break-Even Analysis & Stock Turnover Reports
- Monthly Sales/ Gross Profit Comparison Report
- Graphical Sales Analysis
- Many more Inventory Reports...

Gen. Ledger Features

- Multiple Unlimited Levels of Accounts Groupings, definable in easy-to-use tree-structure (like MS Explorer)
- Definable Fields & Groupings in Account Master
- Definable Ledgers & Sub-Ledgers
- Activity / Cost Center Codes - to analyse any Income/Expenses by the same
- Accounts Templates - allows you various sets of Account Groupings for different purposes
- Account Master Enquiry
- Statement of Account & General Ledger
- Customer/Supplier Outstanding Report
- Audit Trails for any Transaction Type
- Automatic integrated updation from Inventory entries
- Transactions: Receipts, Payments, Petty Cash Payments, Debt & Credit Notes, Journal Vouchers, Opening Balances, Post-dated Cheques Received & Issued, Maturing, PDC for Collection, PDC Discounting
- Financial Statement: Trial Balance, Balance Sheet, Profit & Loss Account (Allow to zoom-in till the transaction level or back to top level, in simple tree-structure, Formats: Debit/Credit, MTD/YTD, Movement, between any Dates, up to any levels)
- Chart of Accounts
- Accounts Transaction Summary
- Budget Comparison Report
- Previous Year Comparison Report
- Monthly Comparison Report
- Many More Accounting Reports

Customers/Suppliers Features

- Definable Fields & Groupings in Party Master
- Multi-Currency Customer/Supplier Accounts
- Customer/Supplier Master Enquiry
- Customer/Supplier Master Log
- Statement of Account & Party Ledgers
- Invoice-wise Outstanding Report
- Post-Dated Cheque Reports
- Account Balances
- Credit Control Report
- Customer/Supplier Age Analysis

- Customer/Supplier Trial Balance
- Last Price Enquiry
- Sales & Profitability Analysis
- Monthly Sales/Profit Comparisons
- Sales/Purchase Summary Analysis
- Graphical Analysis etc etc

Banking & PDC Features

- Bank Master Enquiry & Statement of Accounts
- Banking Transactions - Receipt, Payments, PDC Received/Issued/Discounted & Matured/Returned
- Automated Bank Reconciliations
- Cheque Issue Register
- Bank Trial Balance
- PDC Reports (Issued/Received/LBD/Matured/Return)

Transaction Features

- Definable Stock & Accounts Documents - Define Own Documents - based on any of the Documents and define various parameters of each Document
- Definable Fields in Documents Header
- Icon Bar for easy selection of various transactions
- Branch/Division in Transactions allows to go to First, Last, Next, Prior, List, Find, Edit, Add, Delete, Print, Filters, Property, Audit Trail, Related Documents & Exit
- Edit & Delete restricted to only authorised users
- Open Multiple Transaction at the same time
- Branch-Division Option for each Transaction
- Print pre-defined number of copies for each doc.
- Accounts/Stock/Other Master File Look-Up Search
- Automated Serial Number with/without Prefix

Report Features

- Icon Bar for easy selection of various Reports
- Export any Report to Word, Excel, Web (HTML), RTF, PDF etc formats & modify/print/fax/e-mail
- User-Friendly Report Interface: Go to First/Last Page, Next/Prior Pages, by Page #, Zoom-in/out, Page Scroll, Search for any Text/Number, Grouping Tree - to directly go to any Group/Sub-Group/Item, Copy and Paste any area in any other application, Keep Multiple Report Windows Open.
- Many more such report features...
- Company Logo+Address, Page #, Date etc in reports

Control Features & Utilities

- Compressed (Up to 90%) Back-Up & Restore
- Multiple User Level Creations - defining the access-rights for each option in the Menu
- User Master - defining Users & their Levels, Edit & Delete rights/passwords, price/discount authorisation levels, restrict cost-view, branch/divisions, ledgers etc
- Password Changing for Access and Edit/Delete
- User Logs - for reporting Usage Activity by Users
- Edit/Delete Logs to track Edited/Deleted Documents
- Report Title Set-Up - including Co. Logo, Address etc
- Company Parameters, Accounts Allocations
- Month-Closing & Year-End Processing
- Change to Previous Years, Other Companies

Optional Modules

- Retail / Point-of-Sale Module
- Fixed Assets Management Module
- Payroll & Personnel Management Module
- Job Costing / Contracting Module
- Manufacturing / Assembly Module
- Sales Order & Purchase Order Module
- Letter of Credit Module
- Consignment Purchase Sales Module
- Cheque Printing Module
- Multi-User, Multi-Branch/Company Customised Solutions etc etc

Advance Options

- Hand Held Pocket PC Solutions - for easy Wireless Stock Checking, Outdoor Sales, Sales Orders etc
- Barcode Label Printing & Scanning
- Product Picture Catalogue
- Privilege Cards, Address Label Printing
- Remote Locations, centralised Networking

Details? Demo? Deals? Contact -

Emirates Business Management
 Dubai (UAE), Tel: 04-2237270/2234787
 Mobile : 05 4503359/ 050 4567066
 Email : sales@visual-ace.com
 Website : www.visual-ace.com

Master Transactions Ledgers Customers Suppliers Stocks Analysis Enquiry Job Manufacture Payroll Fixed Asset Utilities Accessories

Business Management Software

