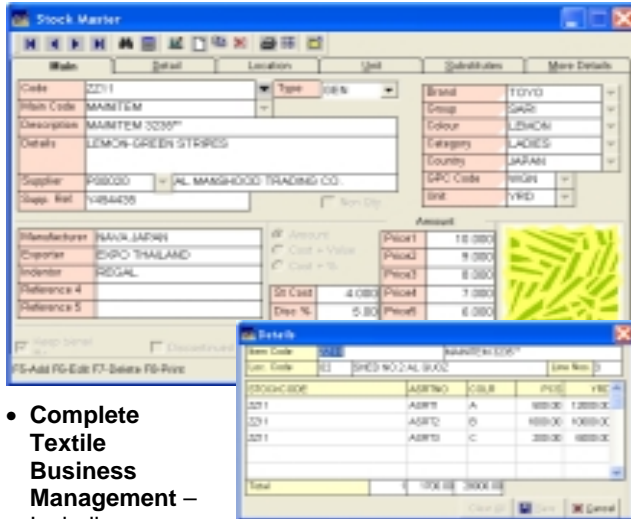


Visual A C E Textile Management Software

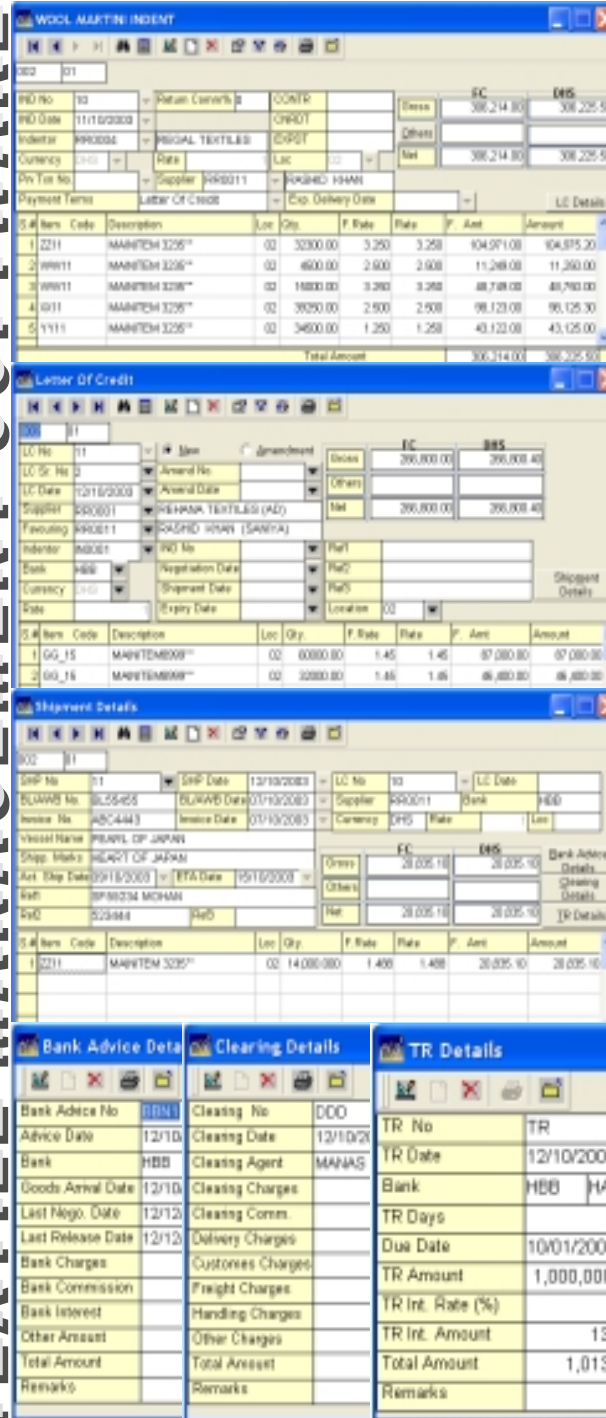
a complete
TEXTILE
MANAGEMENT
software with
inventory control,
accounts &
management
reporting

Textile Features



- **Complete Textile Business Management** – Including Inventory Control, Accounts & Analysis
- Covers **complete purchase process** – Indents, LC, Amendments, **Shipment** Details, Bank Advice, LTR, Clearing Details, **Import** and Local Purchases
- **Indent/Order Booking:** Indent/Order Entry & Print, Detailed & Summarised Indent Registers for All/Pending/Processed Orders, Grouping by Indentor, Supplier, Origin, Item, Category, Manufacturer etc
- **Letter of Credit (LC) Opening:** LC Entry with full details, including Bank, Favouring, Supplier, Manufacturer, LC Expiry Date, Shipment Date, Negotiation Date, Multiple Line Items, allows partial shipments etc. **Reports** : Detailed & Summarised LC Registers for All/Pending/Processed LCs, Grouping by Bank, Indentor/Supp/Mfg/Origin, Item/Category etc
- **Letter of Credit Amendments:** tracks all Amends
- **Shipment Details, Bank Advice, Clearing**

TEXTILE MANAGEMENT SOFTWARE



- **Import Purchase**
- **Loan Against Trust Receipt (LTR)**
- **Sales Invoicing & Sales Return**
- **Multi-Location, Multi-Branch, Multi-Currency, Multi-User**
- **Automated Landed Costing**
- Quantity in **Cartons, Pcs & Yards**
- Control each Import by **Stock Code, Design, Colour** etc
- Enter **LC/LTR Bank Limits** and match Actual Balances
- **LTR Interest Calculations**
- **Indent/LC Registers** – All/Pending, detailed/Summary
- **Tracking of Dates:** LC Expiry Date, Neg. Date, ETA, Shipment Date and various other Dates
- **Sales & Return Commissions**
- **Invoice Outstanding Reports**
- Complete Control for **PDC** Received/Issued/Discount/Matured/Returns
- **Detailed Management Reports**

Main Modules

- **Inventory Control**
- **General Ledger, Accounts Receivables & Payables**
- **Banking & Post-Dated Cheques**
- **Management Analysis Reports**
- **Masters, Transactions, Utilities & Files**

Inventory Control Features

- Inventory in **Cartons, Pieces & Yards**
- Stock Control by **Colour, Design/Assortments**
- Define **own fields & groupings** in Item Master
- Define **'Main Item'** and **Item for each import**
- Include **Picture** of each Item with Item Master
- **Multiple Locations** for warehouses, branches etc
- **5 definable Price Levels**– in Amount or Cost+% or Cost+Profit. Price Levels can be labelled, e.g. Retail Price, Wholesale Price, Export Price, Dealer Price etc
- Define Stock Min/Max, **Re-Order Levels & Re-Order Quantity** for proper Stock Control & Re-Ordering
- **Multiple Units** – with conversion factors & Price Levels
- **Substitutes** – for linking replaceable items
- **Stock Transactions:** Import & Local Purchases, Purchase Return, Sales, Sales Return, Stock Adjustments, Location Transfers etc
- Automatic **Landed Cost** calculation of the Items – including Item Cost, LC Charges, Freight, Insurance, Custom, Clearing Charges, Hamali etc
- **Various Costing Methods** can be selected – Average Cost, Last Average, FIFO, Last Cost, Standard Cost etc.
- Define **Fields & Grouping** for each Type of Stock
- **Bin Locations** for exact rack address of items
- **Multi-Level Groupings** in Stock Reports

- **Stock Master Enquiry** (Detailed & Summary) – Showing complete details of any item – last cost, last price, Stock Balance, Movements, Last Documents etc – allowing to zoom-in to Stock Card & any Transaction
- **Stock Balance & Stock Card** Reports
- Stock Transaction Register
- **Price List & Last Price Enquiries** for Sales, Purchase
- **Stock Adjustments** for Excess/Short Stock
- **Stock Age Analysis** Report for Old Stocks
- **Slow Moving Stock Analysis** Report
- **Stock Movement** Report
- **Stock Transaction Analysis** Report
- **Sales & Profitability Analysis Report** by Item, Item Groupings, Indentor, Supplier, Manufacturer, Customer, Customer Groupings, Salesman, Invoice etc
- **Break-Even Analysis & Stock Turnover** Reports
- **Monthly Sales/Gross Profit Comparison** Report
- **Graphical Sales Analysis**
- **Many more** Inventory Reports...

General Ledger Features

- **Multiple Unlimited Levels of Accounts Groupings**, definable in easy-to-use tree-structure (like Ms Explorer)
- **Definable Fields & Groupings** in Account Master
- **Definable Ledgers & Sub-Ledgers**
- **Activity / Cost Center Codes** – to analyse any Income/Expenses by the same
- **Multi-Currency Accounts**
- **Accounts Templates** – allows you various sets of Account Groupings for different purposes
- **Account Master Enquiry**
- **Statement of Account & General Ledger**
- Customer/Supplier **Outstanding** Report
- **Audit Trails** for any Transaction Type
- Automatic **integrated updation** from Inventory entries
- **Transactions:** Receipts, Payments, Petty Cash Payments, Debit & Credit Notes, Journal Vouchers, Opening Balances, Post-dated Cheques Received & Issued, Maturing, PDC for Collection, PDC Discounting
- **Financial Statement:** Trial Balance, Balance Sheet, Profit & Loss Account (Allow to zoom-in till the transaction level or back to top level, in simple tree-structure, Formats: Debit/Credit, MTD/YTD, Movement, between any Dates, up to any levels)
- **Chart of Accounts**
- **Accounts Transaction Summary**
- **Budget Comparison** Report
- **Previous Year Comparison** Report
- **Monthly Comparison** Report
- **Many More** Accounting Reports

Customers/Suppliers Features

- **Definable Fields & Groupings** in Party Master
- **Multi-Currency** Customer/Supplier Accounts
- Customer/Supplier **Master Enquiry**
- Customer/Supplier **Master Log**
- **Statement of Account & Party Ledgers**
- **Invoice-wise Outstanding** Report
- **Post-Dated Cheque** Reports
- **Account Balances**
- **Credit Control** Report
- Customer/Supplier **Age Analysis**
- Customer/Supplier **Trial Balance**
- **Last Price Enquiry**
- **Sales & Profitability** Analysis
- **Monthly Sales/Profit Comparisons**
- **Sales/Purchase Summary Analysis**
- **Graphical Analysis** etc etc

Banking & PDC Features

- **Bank Master Enquiry & Statement of Accounts**
- **Banking Transactions**– Receipt, Payments, PDC Received/Issued/Discounted & Matured/Returned
- Automated **Bank Reconciliations**
- **Cheque Issue Register**
- **Bank Trial Balance**
- **PDC Reports** (Issued/Received/LBD/Matured/Return)

Transaction Features

- **Definable Stock & Accounts Documents** – Define Own Documents – based on any of the Documents and define various parameters of each Document
- **Definable Fields** in Documents Header
- **Icon Bar** for easy selection of various transactions
- **Control Bar** in Transactions allows to go to *First, Last, Next, Prior, List, Find, Edit, Add, Delete, Print, Property, Filters, Audit Trail, Related Documents & Exit*
- Edit & Delete restricted to **only authorised users**
- **Open Multiple Transaction** at the same time
- **Branch-Division Option for each Transaction**
- **Print pre-defined number of copies** for each doc.
- Accounts/Stock/Other Master File **Look-Up Search**
- **Automated Serial Number** with/without Prefix

Report Features

- **Icon Bar** for easy selection of various Reports
- **Export** any Report to Word, Excel, Web (HTML), RTF, PDF etc formats & modify/print/fax/e-mail
- **User-Friendly Report Interface:** Go to First/Last Page, Next/Prior Pages, by Page #, Zoom-in/out, Page Scroll, Search for any Text/Number, Grouping Tree – to directly

Visual
ACE

go to any Group/Sub-Group/Item, Copy and Paste any area in any other application, Keep Multiple Report Windows Open. Many more such report features...

- **Company Logo+Address, Page #, Date** etc in reports

Control Features & Utilities

- Compressed (Upto 90%) **Back-Up & Restore**
- Multiple **User Level** Creations – defining the access-rights for each option in the Menu
- **User Master** – defining Users & their Levels, Edit & Delete rights/passwords, price/discount authorisation levels, restrict cost-view, branch/divisions, ledgers etc
- **Password** Changing for Access and Edit/Delete
- **User Logs** – for reporting Usage Activity by Users
- **Edit/Delete Logs** to track Edited/Deleted Documents
- **Report Title** Set-Up– including Co. Logo, Address etc
- **Company Parameters, Accounts Allocations**
- **Month-Closing & Year-End** Processing
- Change to Previous Years, Other Companies

Optional Modules

- **Retail / Point-of-Sale** Module
- **Fixed Assets** Management Module
- **Payroll & Personnel Management** Module
- **Job Costing / Contracting** Module
- **Manufacturing / Assembly** Module
- **Sales Order & Purchase Order** Module
- **Letter of Credit** Module
- **Consignment Purchase/Sales** Module
- **Cheque Printing** Module
- **Mutli-User, Multi-Branch/Company**
- **Customised Solutions** etc etc

Advance Options

- **Hand Held** Pocket PC Solutions – for easy Wireless Stock Checking, Outdoor Sales/Sales Orders etc
- **Barcode Label Printing & Scanning**
- **Product Picture Catalogue**
- **Privilege Cards, Address Label** Printing
- **Remote** Locations, centralised Networking

Details, Demo, Deals ? Contact Now -

Emirates Business Management

Dubai (UAE), Tel: 04-2237270, 04-2234787, 050-6450359
 Fax: 2281411, Email: textile@visual-ace.com
 Home Page: <http://www.visual-ace.com/textile>

** Software Developed, Owned, Supported & Marketed by Emirates Business Management (EBM). The above is only general information with options. Check for specific information. EBM reserves the right to add/remove any features/modules/options.*